


I hope you've enjoyed filling in your Sketchbook. Here are some more Shakespeare sketching ideas...

CROWNS

Copy these shapes - first in pencil, then add colour. Try using some foil or sweet wrappers too, you could even add some sequins for jewels!



CASTLES

Draw layers of different-sized tubes. Add pointy 'hats' to some and teeth shapes →  to others, to make castle turrets!



THE TUDOR ROSE

Copy the rose shape in pencil. Add the red and green colours. Draw the details on top of the colour.



If you enjoyed this booklet and want to find out more about Shakespeare then go to our website at: www.shakespeareweek.org.uk and click on Kids' Zone where you will find lots more fun things to do. You could also ask your teachers or families to sign up to the website for even more fun, free resources.

Jennie Maizels

Join Jennie's Online Sketchbook Club for more creative projects!

'S

AMAZING SHAKESPEARE SKETCHBOOK!



Jennie Maizels

Welcome to your Shakespeare Sketchbook! You can create scenes from two of Shakespeare's plays - *A Midsummer Night's Dream* and *Macbeth*. You can also draw your own Shakespeare portrait. Follow the instructions on each page to create your masterpieces.

Create your own Midsummer Night scene!

1

Create a beautiful frame around the woodland scene, like the one on this page.

Tip: Start with the leaves, then add flowers on top.

2

Start to create your scene by copying the images below. Titania has just fallen in love with Bottom. All the fairies and Puck are looking on.

Tip: Draw in pencil first, then add colour using paint or coloured pencils/pens.

3

Finally, add flowers and bunting hanging from the trees by copying the images below...

Try using coloured pencils for the details over paint, like lines on leaves and fairy wings. It's so effective and much easier!

Try using collage by sticking in triangles for bunting.

You could use little finger prints for petals.

Bottom

Titania

I'm Puck! I turned Bottom into a Donkey & made Titania fall in love with him. Haha!

Mr William Shakespeare by...

Create your own Witches of Macbeth scene!

1

Create a spooky frame around the cauldron scene like the one on this page.

Tip: You might like to copy some of the spiders and bats.

2

Start to create your scene of the three witches around the cauldron by copying some of the witches below. What are their hats like? What is coming out of their bubbling cauldron?

Tip: Draw in pencil first. Then add colour, using paint or coloured pencils/pens.

3

Finally, add lots of swirling, curling plumes of smoke and green stars of evil magic!

Try splattering your drawing by dipping your brush into some green or black paint and flicking it with your finger to make it more spooky!

Try using collage such as black or shiny paper for hats and buckles.

Draw the witches' faces first, then add their hats!

Copy these 3 stages to help you draw your witch!



Create your own Shakespeare Portrait!

1

Copy the portrait of Shakespeare in pencil onto the page opposite (you can see a faint outline to help you)...

2

Add colour!
Either in coloured pencils or paint.

Tip: Colour in the face first before adding the features.

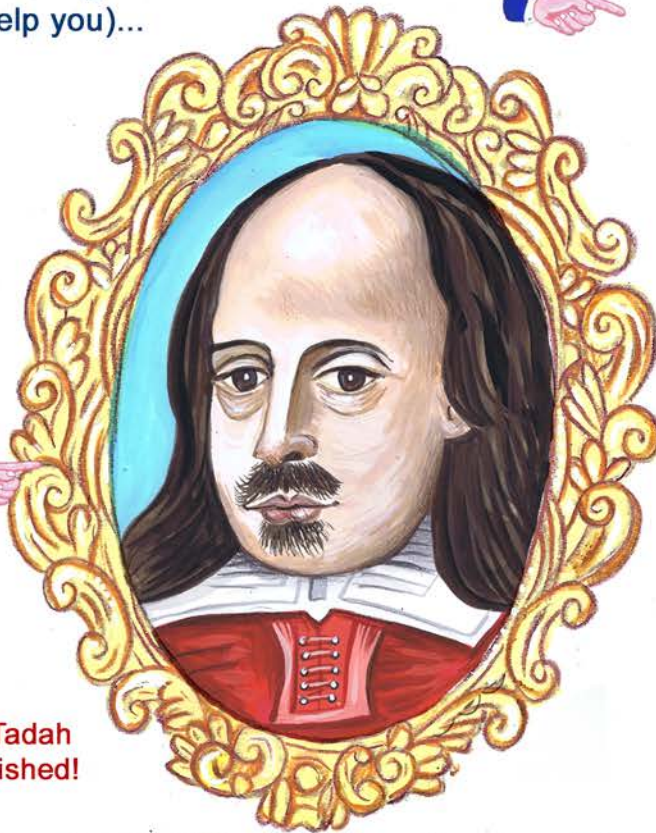
3

Now you can start to draw in the frame.

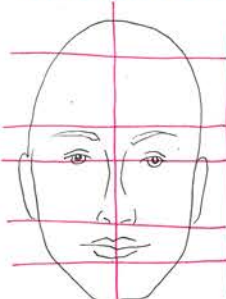
Have a look at the frames on this page and start to draw in your own fancy frame around your Shakespeare Portrait. You could treat it a bit like a doodle...

Next you can add colour using paints or pencils.

...Tadah
Finished!

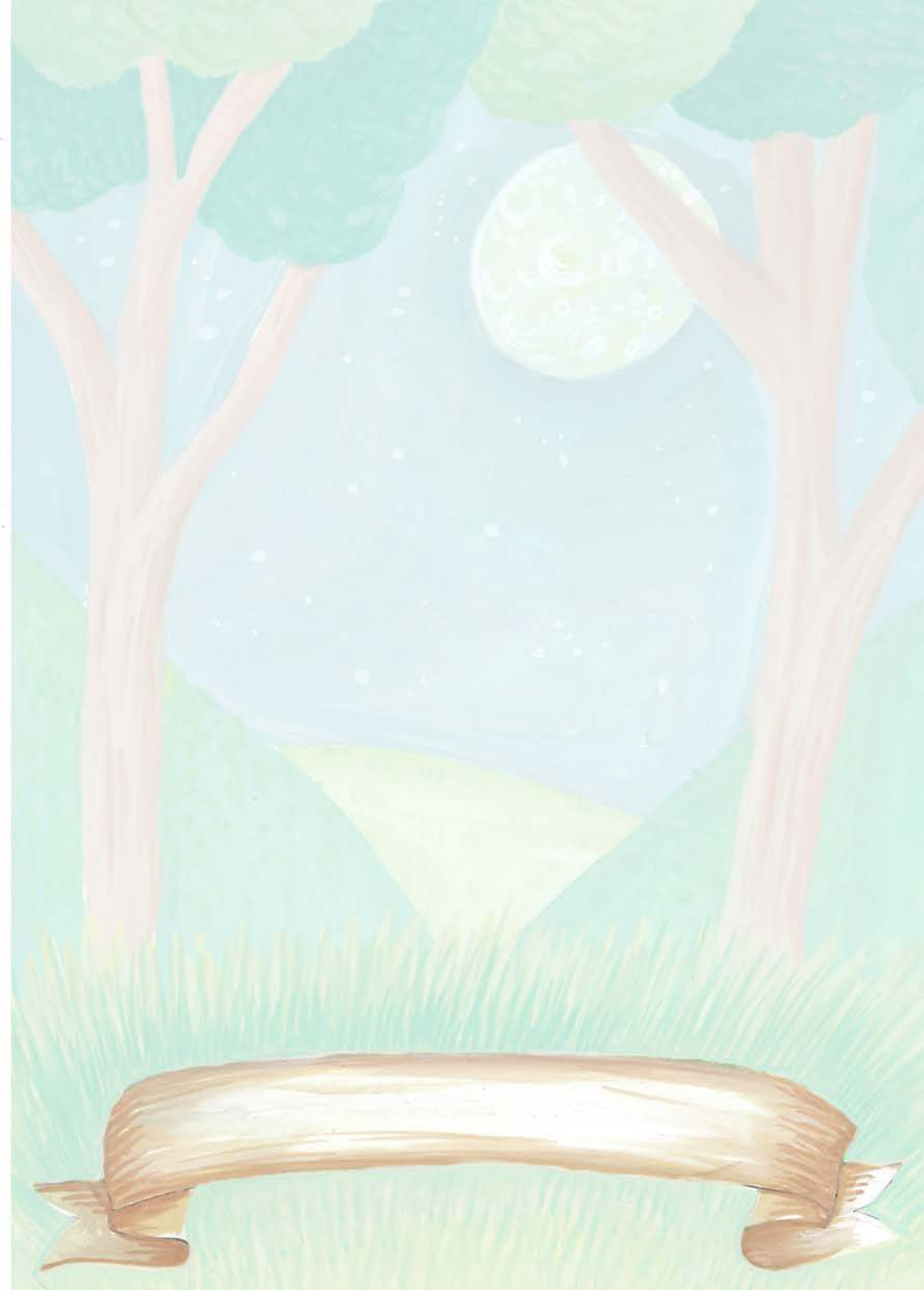


TIPS ON PORTRAIT PAINTING



Hard to believe but the eyes are actually in the **CENTRE** of the face. If you also remember your nose is **TWICE** the height of your

lips, you should be portrait perfect!



Mini Stratford-upon-Avon instructions

Art & Craft

1. Using an HB pencil, start to draw over one of the pale buildings on the transfer sheet. Make sure you include all the windows and beams. Just draw loose shapes around trees and hedges etc. and don't worry about all the tiny window details - we'll do these later.
2. Next, position the transfer sheet upside down on your page and scribble firmly and evenly over the back to reveal the template underneath!
3. Now go over all the pale pencil transfer lines using a black fine liner pen.
4. Looking at the reference sheet with all the buildings on it, start to add colour.
5. Making sure your watercolour paint is nice and strong - start with the dark brown beams and roofs (if they are to be brown too). Work carefully in between your black fine lines and make sure to cover all the elements. Then add any other colours like red roofs or greenery.
6. For the windows, just paint them dark grey and add some painted brown frames when dry. Add black fine liner crosses or diagonal stripes for the leadwork (again when all the paint is dry).
7. Next, to add shadows, make a very pale blue. Try it out on your paper first to check it isn't too strong. Then add thin stripes of the pale blue where you can see shadows on the reference, like under the eaves etc.



Full range of resources at
shakespeareweek.org.uk



Mini Stratford-upon-Avon instructions

Art & Craft

8. If you are painting Anne Hathaway's Cottage or Palmer's Farm, paint a green background wash where the greenery is, then add lots of watery dots on top by dabbing your brush repeatedly over the area, creating trees and shrubs. You might also like to add some coloured flowers using the same technique once all the green paint is dry.

9. Next, cut out your house or building and draw around a cup and cut out the circle carefully using your scissors.

10. Next, fold your circle in half and cut a slot into one half, then tape the other half to the back of your building. Fold one half forward to create a little stand, that way your building will stay upright. Be sure to watch the video demonstrating how to do this.

11. If you're doing a lot of buildings, continue this way until you have created your very own magnificent mini Stratford Upon Avon! This is a lovely project to display on a mantelpiece or windowsill. Or you could create an 'all together' project to do with friends.

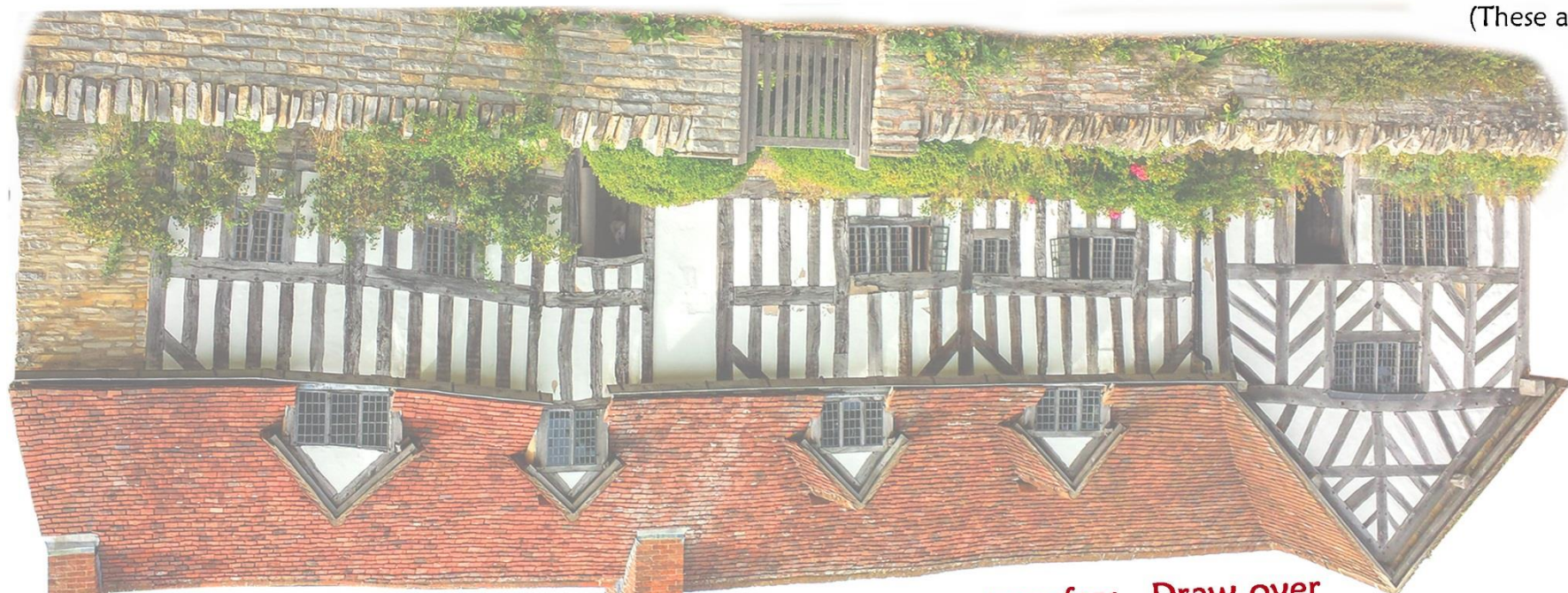
I do hope you enjoy creating this special Sketchbook Club project. Please do share your creations using the hashtags #SketchbookClubStratford and #Shakespeareweek.



Full range of resources at
shakespeareweek.org.uk



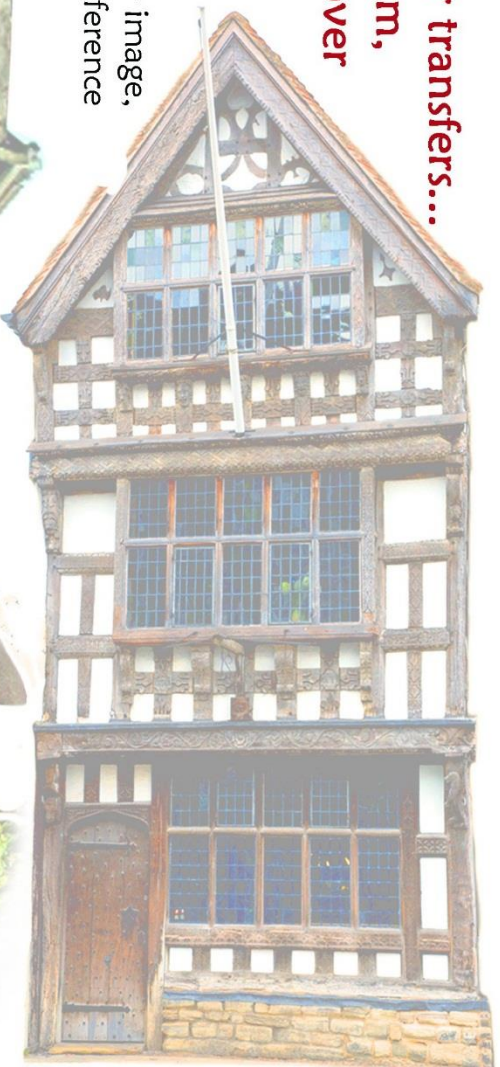
(These are in mirror image,
so copy the main
reference when
drawing)



These are your transfers...Draw over
them, then scribble over the back to reveal
your template.



These are your transfers...
Draw over them,
then scribble over
the back to
reveal your
template.
(These are in mirror image,
so copy the main reference
when drawing)



Use these photographs as reference
for your Shakespearian Street!

- 1 Palmer's Farm at Mary Arden's Farm
- 2 Shakespeare's Schoolroom & Guildhall with the Guild Chapel
- 3 Shakespeare's Birthplace
- 4 Anne Hathaway's Cottage
- 5 Nash's House
- 6 Harvard House

